

Narrative: This map shows what percentage of each state is owned by the federal government. Trust lands, mostly Indian reservations, are not included. Nevada and Alaska top the list and all Western states have at least 30 percent of their land under federal control. Back east, New Hampshire, Vermont, and of course the District of Columbia, have the most federal land.

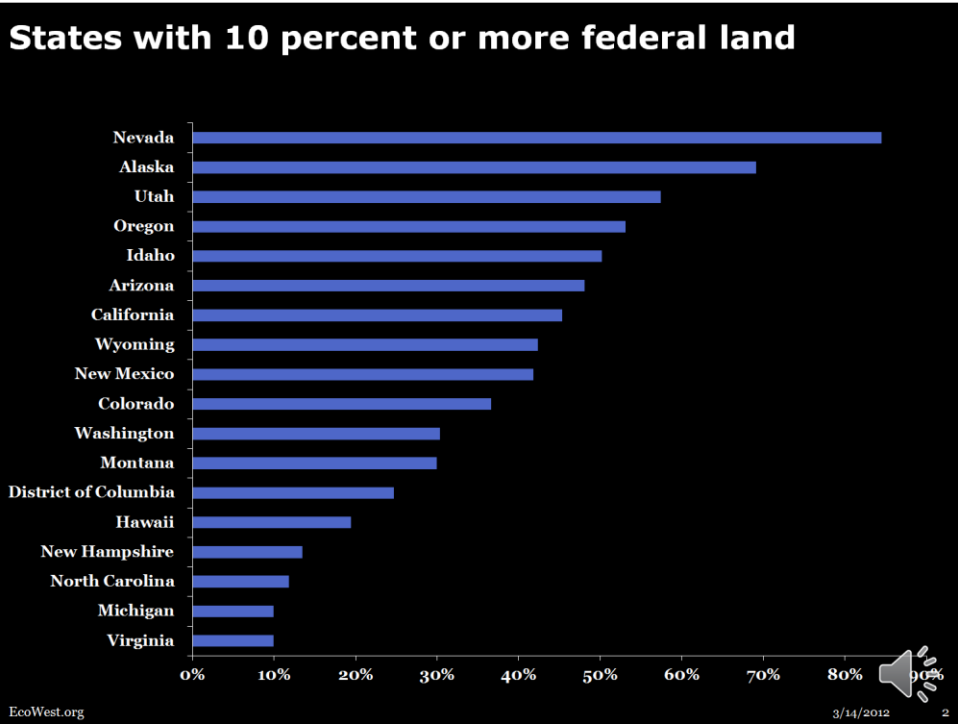
Source: U.S. General Services Administration, Federal Real Property Profile 2004

URL:

http://www.gsa.gov/graphics/ogp/Annual_Report__FY2004_Final_R2M-n11_0Z5RDZ-i34K-pR.pdf

Notes: Excludes trust properties. Adapted from map in Kennedy, Donald, "Can the West Lead Us to a Better Place?," Stanford Magazine, May/June 2008.

<http://www.stanfordalumni.org/news/magazine/2008/mayjun/features/west.html>



Narrative: Here we see all of the states that have at least 10 percent of land owned by the federal government. The first dozen are Western states.

Source: U.S. General Services Administration, Federal Real Property Profile 2004

URL: http://www.gsa.gov/graphics/ogp/Annual_Report__FY2004_Final_R2M-n11_0Z5RDZ-i34K-pR.pdf

Notes: Excludes trust properties